

SILENTGLIDE
CURTAIN AND BLIND AUTOMATION

35mm RF Electronic Limit

240V Molex

User Manual

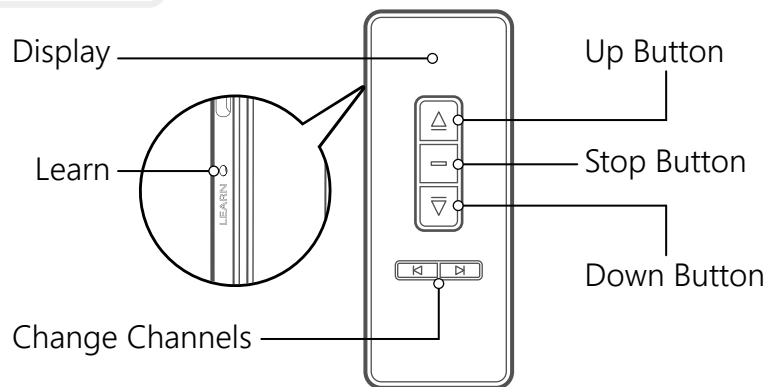


1 PRODUCT OVERVIEW:

Tubular Motor:



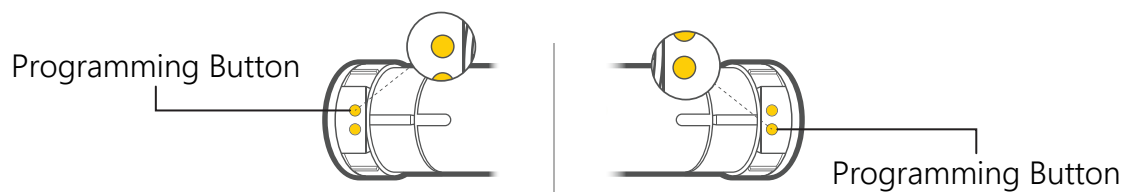
Remote Control:



2 PROGRAMMING BUTTON:

Important to know!

- On the head of the motor, you will find 2 yellow buttons to pair the remote and reset the motor.



- You'll observe two yellow buttons on the motor head, designated for pairing the remote and resetting the motor. For a left-hand side installed motor, the programming button will be located at the top, while for a right-hand side installed motor, it will be at the bottom.
- Requirement:** A paper clip or jeweller's screwdriver is perfect, as it is small enough to fit both the hole in the head of the motor and the learn button on the remote control.

3**TO PAIR THE MOTOR AND A REMOTE/CHANNEL:**

(To be done within 10 seconds)

1. Press and hold the programming button on the head of the motor for more than three seconds using a paper clip or similar object in order to activate the motor. The motor will start to shake briefly.
2. On the remote control, select the channel of your choice.
3. Within 10 seconds, briefly tap the "Up" button. Do not hold the button.
4. The motor will start to shake briefly.

4**TO CHANGE THE ROTATION DIRECTION:**

(To be done within 10 seconds)

1. If the direction is correct, you do not need to take any action and should proceed to set the limit setting section.
2. If the direction is not correct, press and hold down the "Stop" button (middle) on the programmed remote control for 7 seconds. The motor will start to shake briefly.
3. Within 10 seconds, tap the "Down" button (do not hold). The motor will start to shake briefly.
4. Test that the blind and the direction of rotation is correct.

5**LIMIT SETTING:**

Setting the limits will ensure the blind stops at the right point at the top and bottom of your windows and will not continue rolling. The motor might currently be in step-by-step mode, but it will switch to continuous movement once the limits are set.

Top Limits:

Note: This action must be completed within 30 seconds; if nothing is done within this time frame, the motor will exit the limit setting function.

1. Using a paper clip, press and hold the "Learn" button located on the side of the remote until you sense a slight vibration.
2. Adjust the blind to your desired position for the Top Limit.
3. Hold down the "Learn" button on the side of the remote until you feel a slight vibration.
4. Adjust the blind to your preferred Bottom Limit position.

5. Hold down the "Learn" button located on the side of the remote; you'll sense a slight vibration.
6. The limits are now saved, proceed to test the blind.

Attention!

- Step 6 is a very important step of Limit Settings.
- If after Learn, the blind moves in small increments instead of a continuous motion:
 1. Hold down the "Stop" Button until the blind motor shakes briefly.
 2. Then, press the "Stop" Button once more.
 3. This action will cause the blind to shake again, restoring continuous movement.

6

RESETTING A MOTOR BACK TO THE FACTORY SETTINGS:

To reset a motor back to factory settings, follow the steps below;

1. Hold down the "Stop" Button on the remote or the channel assigned to the motor, the motor will shake briefly.
2. Then hold down the "Learn" button located on the side of the remote for a total of 7 seconds. When the motor shakes twice it is restored to its factory settings.

Note: First you will notice the motor shake once, followed by a double shake a few seconds later. This indicates that the motor has been successfully returned to factory settings.

7

TO ADD MULTIPLE BLINDS TO A GROUP CHANNEL:

Important: These steps are given as an example for adding multiple blinds to a single channel, by following the steps below, you can put multiple blinds all on a particular Channel.

Note: Putting multiple blinds onto Channel 6 is used as an example.

1. On the remote control, select blind 1 on channel 1 then Hold down the "Stop" button until the blind motor shakes, now select channel 6 and press and hold the "Up" button until the motor shakes. The Blind 1 has now been added to channel 6.
2. Now, for adding Blind 2, on the remote control, select blind 2 on channel 2 then Hold down the "Stop" button until the blind motor starts to shake, Now select channel 6 and press and hold the "Up" button until it shakes. The Blind 2 has been added to channel 6.

3. Move all the blinds to channel 6, by repeating the same steps.

Note: This feature can also be used to transfer motors onto other Remote Controls.

8 **ADDITIONAL FEATURES:**

Beyond the simple programming steps, the motor offers some other additional functions as well.

Intermediate Limits:

This motor can store an additional four Intermediate Limits, in addition to the Top and Bottom Limits.

To Set Intermediate Limits:

1. Once the Top and bottom limits have been set and the programming mode has been exited, move the blind to the position at which the intermediate limits are required.
2. Press the "Learn" button on the side of the remote until the motor shakes.
3. Press the "Learn" button again, and the motor will shake again indicating an intermediate limit has now been set.

When operating the blind if you do not want to stop at the intermediate limit:

1. Press the button corresponding to the direction in which you would like to move the blind.
2. As soon as the blind starts to move, press the same button a second time and it will skip that limit and move on to the limit furthest away.

Adjusting a Limit after it has been set:

1. Move the blind to the limit you wish to set.
2. Hold down the "Learn" button located on the side of the remote control until the blind motor shakes. Next, adjust the blind to the desired new limit position, and once again, press the "Learn" button on the side of the remote control.
3. After adjusting the limit, the blind motor will shake to indicate the completion of the adjustment process.

To delete an Intermediate Limit or Bottom Limit:

Note: It is impossible to delete the Top limit in this way. For deleting the top limit, see the part "Resetting a Motor Back to the Factory Settings".

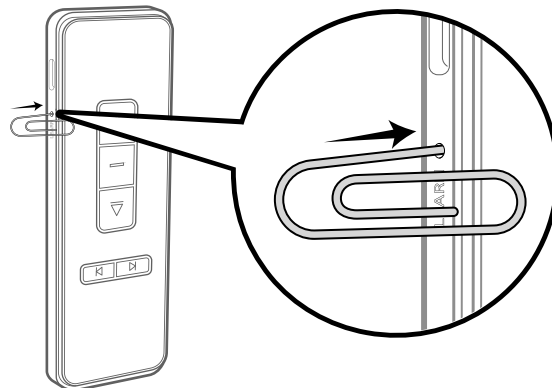
To delete an Intermediate or Bottom Limit, follow the steps below;

1. Move to the limit you want to delete.
2. Press and hold the "Learn" button located on the side of the remote. While keeping the button pressed, observe the blind motor shaking once. After approximately 5 seconds, the blind will shake a second time, indicating that the limit has been successfully deleted.

Note: Battery motors incorporate a low-power feature designed to significantly prolong battery life. Consequently, when in operation, it's necessary to press the learn button on the remote slightly longer (approximately 1 second) to activate it. This action wakes up the receiver in the motor, allowing the blind to function as usual."

9 TO DELETE A REMOTE OR CHANNEL:

1. To initiate the motor on the designated remote or channel for deletion, press and hold the "Stop" (middle) button for more than 3 seconds. This action will awaken the motor, causing it to shake slightly.
2. Now, within 10 seconds of the first step, use a paperclip or a similar tool to press and hold the "Learn" button located on the side of the remote control for 3 seconds, the motor will shake briefly to indicate it has completed the task.



10 TO SWITCH FROM AUTOMATIC MOVEMENT TO MANUAL MOVEMENT (OR VICE VERSA):

1. Activate the motor by pressing and holding the "Stop" button for 5 seconds. This action will prompt the motor to shake slightly.
2. Within 10 seconds, give a quick tap (do not hold) to the "Stop" button. This will make the motor shake a bit indicating a direction change.

11

REMOVING A BLIND FROM AN ALREADY PAIRED CHANNEL:

Option: 1

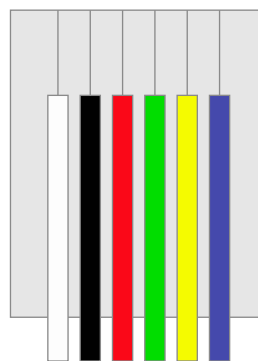
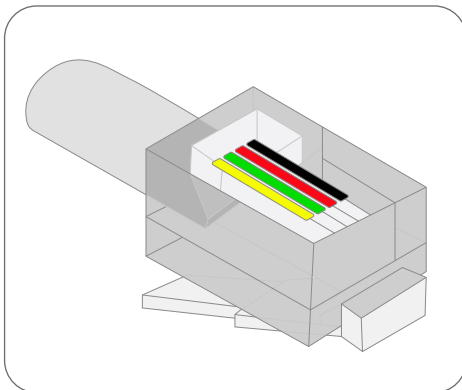
If you have multiple motors assigned to a specific channel and need to remove only one motor, follow these steps:

- Factory reset the motor that needs to be moved.
- Then, begin the process of pairing and assigning the motor to the appropriate channel again.

Option: 2

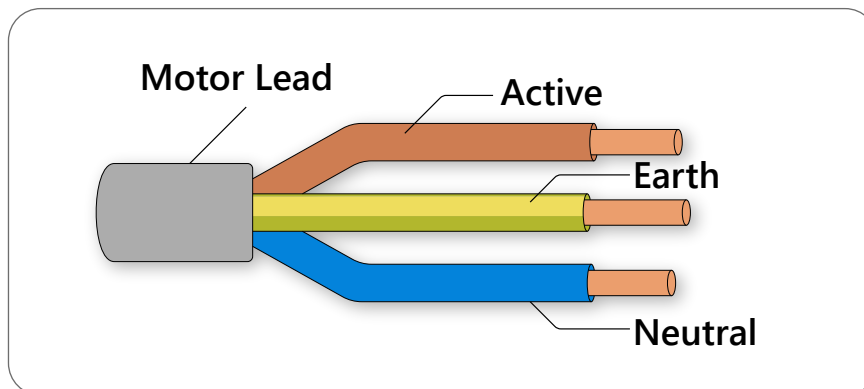
If there is only one motor assigned to a channel, consider utilising the 'Delete Channel' instructions. After following these steps, you can proceed to set up and start anew.

Connection Requirements Optional Dry Contact Control or Serial RS485/232



- White: Serial A
- Black: Common
- Red: Up
- Green: Stop
- Yellow: Down
- Blue: Serial B

RF Remote Operation





SILENTGLIDE
CURTAIN AND BLIND AUTOMATION